



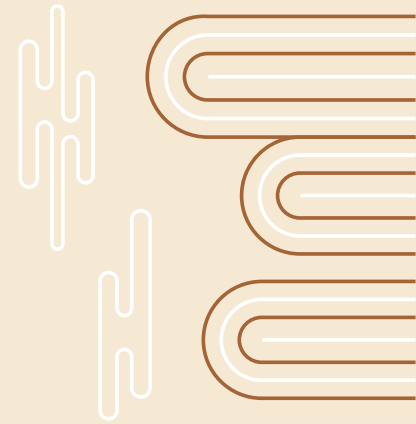
# THE EMBERS - MUKIMA



LUXURY LIVING IN NATURE

# WHERE LUXURY MEETS THE SERENITY OF NATURE

---



Located within Nanyuki's serene Mukima Ridge, The Embers offers a rare sanctuary where life slows down and every day feels like a retreat.

Wake up to the sweeping views of Mount Kenya and the rolling Lolldaiga Hills, and let the natural beauty become part of your everyday life.



# EXCLUSIVITY REDEFINED

The Embers is a gated haven of privacy and sophistication, designed for those who seek peace without compromise. With just 20 units on half-acre plots, the estate offers an intimate community while delivering world-class amenities:

- A clubhouse for social & leisure gatherings in nature with an events grounds.



Every plot comes **fully serviced** with the below creating the perfect canvas for your dream home in nature.



Water



Electricity



Connecting Roads



Sewer Connections



Intimate Exclusive Community



Perimeter Fence for Assured Security



IN EVERY WALK WITH NATURE, ONE RECEIVES  
FAR MORE THAN HE SEEKS.

---

John Muir



# A LIFE OF LUXURY, LEISURE, AND ESCAPE

---

Imagine waking up to the sun rising over Mount Kenya, sipping coffee as the gentle breeze carries the scent of wildflowers. The Embers allows you to live in harmony with nature, yet with every luxury at your doorstep.



OWN YOUR **ESCAPE.**

INVEST IN YOUR **FREEDOM.**

---



Whether seeking a permanent residence, a vacation escape, or an investment property that doubles as a private retreat, our eco-lodge-inspired estate offers:

- Flexible living options: 3 or 4-bedroom luxury homes
- Pre-approved architectural plans or the freedom to design your own
- Investment opportunities with the potential for short- and long-term returns



A person stands on a dark rock in the foreground, their arms raised in a gesture of triumph or awe. They are silhouetted against a bright, golden sunset. In the background, a large, conical mountain, likely Mount Fuji, rises majestically under a sky filled with soft, wispy clouds. The overall atmosphere is one of peace and connection with nature.

LOOK DEEP INTO NATURE, AND THEN YOU  
WILL UNDERSTAND EVERYTHING BETTER.

---

Albert Einstein



## YOUR PRIVATE SANCTUARY

---

Each half-acre plot at The Embers is a private canvas surrounded by nature's beauty. Carefully positioned to maximize sunlight, airflow, and sweeping vistas, each plot provides:

- Exclusive views of Mount Kenya and the Lolldaiga Hills
- Ample space to design your dream home
- Immediate access to all estate amenities

Every plot invites you to craft a home where luxury, privacy, and nature coexist effortlessly.





## WHERE EVERY **MOMENT** FEELS LIKE A **RETREAT**

---

Life at The Embers is designed to soothe, inspire, and recharge. Stroll through landscaped gardens, enjoy a sunset by the infinity pool, or simply relax with the mountains as your backdrop.

Here, luxury living blends seamlessly with the natural world, creating a lifestyle that feels both indulgent and restorative.





**ADOPT THE PACE OF NATURE: HER  
SECRET IS PATIENCE**

---

Ralph Waldo Emerson



## YOUR DREAM HOME AWAITS

---

Discover an unparalleled opportunity to own a private retreat in Nanyuki's most exclusive estate. Whether for your own escape or a luxury investment, The Embers invites you to live fully, breathe deeply, and experience nature without compromise.





**RESERVE YOUR HALF-ACRE PLOT  
TODAY AND EMBRACE THE  
LUXURY OF LIFE IN NATURE.**





# THE EMBERS - MUKIMA SITE PLAN

**1 Plot Sold, 19 Plots Available for Sale**





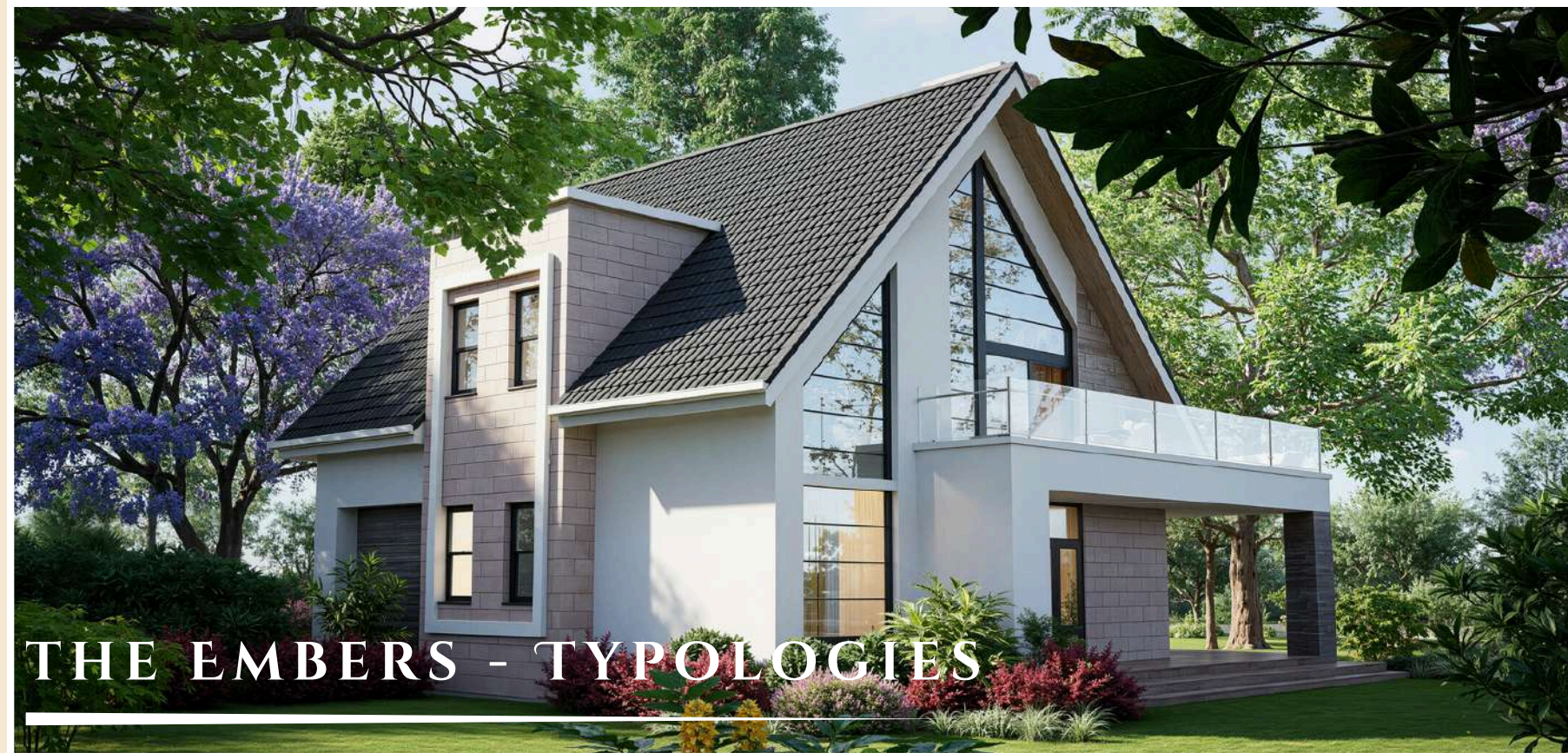
## THE EMBERS - OVERVIEW





# THE EMBERS - CLUB HOUSE





THE EMBERS - TYPOLOGIES





THE  
**EMBERS**

LUXURY LIVING IN NATURE

**By LTG Limited (Lenana Terrace Gardens Limited)**

# CONTACT US

Phone Number: **+254713995516**

Email: **sales@ltgkenya.co.ke**

Website: **embersmukimaridge.ltgkenya.co.ke**

*Your Dream Home Awaits*